



www.belkaturkiye.com
www.belkagroups.com

BELKA[®]
Cotton Wall Coating

BELKA[®]
Cotton Wall Coating

welcome to the world of BELKA...



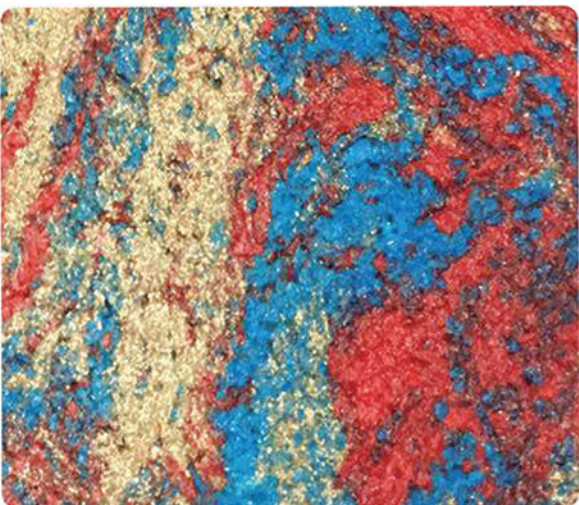
Belka marks an evolution in render. Made from cotton, Belka is a one coat only, trowel applied product resulting in a seamless Designer finish!

Belka has a smooth yet subtle texture and some colours even have a mineral fleck that shimmer in the light. From earthy tones to high impact feature walls, Belka achieves a stunning dynamic in any room.

Belka is fast to apply and can be applied to just about anything. The substrate requires little to no preparation and only needs of one coat to hide deep grout lines, cracks, unevenness and all other imperfections.

Being made from cotton, Belka is flexible, has acoustic and thermal properties and offers many other benefits that you can't achieve with paint, cement and acrylic renders.

Belka is natural, with zero VOC's, and available in over 60 pre-coloured finishes.



About Belka

First impressions are lasting impressions and at the Belka Group we believe that walls make a huge statement about the decor of a room, building or home. Whether it's a room transformation, feature wall, house or building Belka offers a unique combination of performance; unparalleled style and versatility that will help you make a statement.

Belka is the ideal modern day low maintenance alternative to paint and wallpaper. It is an easy and cost effective way to add color, texture and style to walls and ceilings. Belka is suitable for use on interior walls and ceilings in residential, commercial and administrative buildings as well as in educational and medical facilities, film and recording studios. Like no other, Belka is a contemporary and sophisticated interior wall coating material that's as good as it gets.

Belka can be readily applied to any surface including plaster, cement, wood, metal, glass and all painted surfaces (acrylic, water or oil based). You can even use Belka to cover a wall with surface flaws such as unevenness, holes, gaps and cracks – just apply straight over them. Belka has been specially designed to deliver stunning professional durable finishes no matter what the surface.

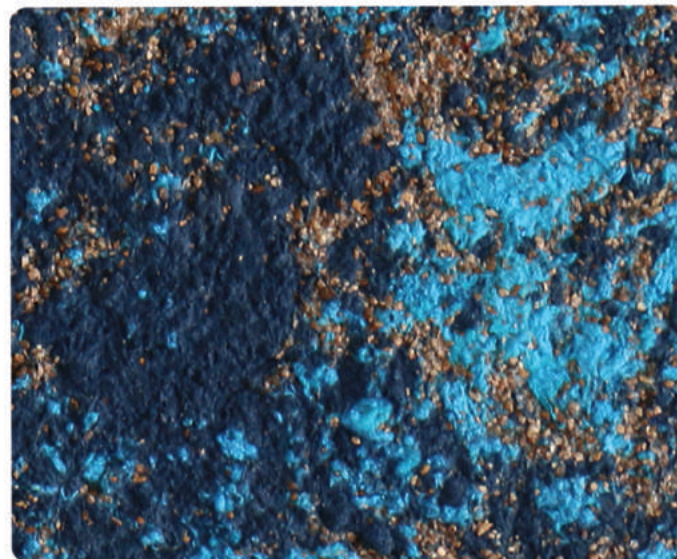
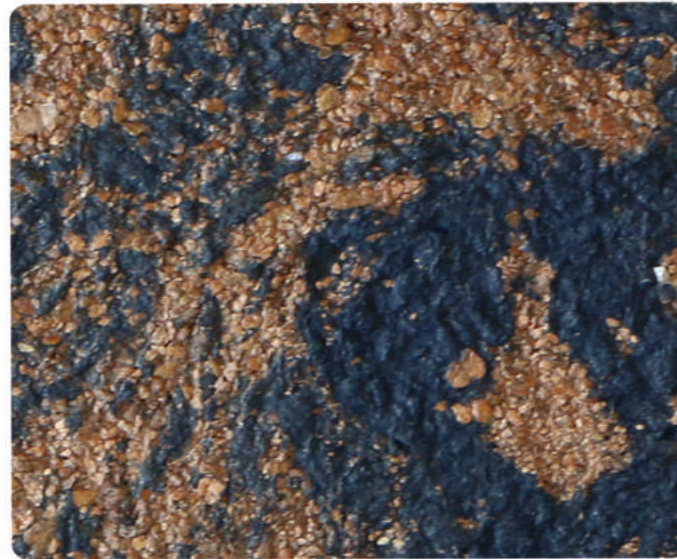
Whatever your existing décor or decorative ideas Belka offers colours and finishes that will allow you to take your walls where your imagination wants to go. Putting multiple colours on a wall, creating patterns or murals with seamless finishes has never been easier.

As we manufacture our own products we stand by them and offer you a 10 year warranty on our products.



**Belka only requires one coat
for a professional finish**

Properties & benefits of Belka



Belka has anti-static properties and will not absorb or attract dust.

Belka can be easily repaired if required.

Belka is fire resistant in the way that if Belka get exposure to direct fire flames, the exposed area gets burned but the flame doesn't expand to other areas.

Belka can be applied directly onto plaster, cement, brick, tiles, wood, metal, glass and all painted surfaces; Belka usually requires little to no surface preparation prior to application, and successfully covers surface flaws such as unevenness, holes, gaps and cracks - just apply over them.

Belka is highly stable and elastic so it will not crack over time.

Belka due to its sound absorption properties, it is also suitable for use in film and sound studios.

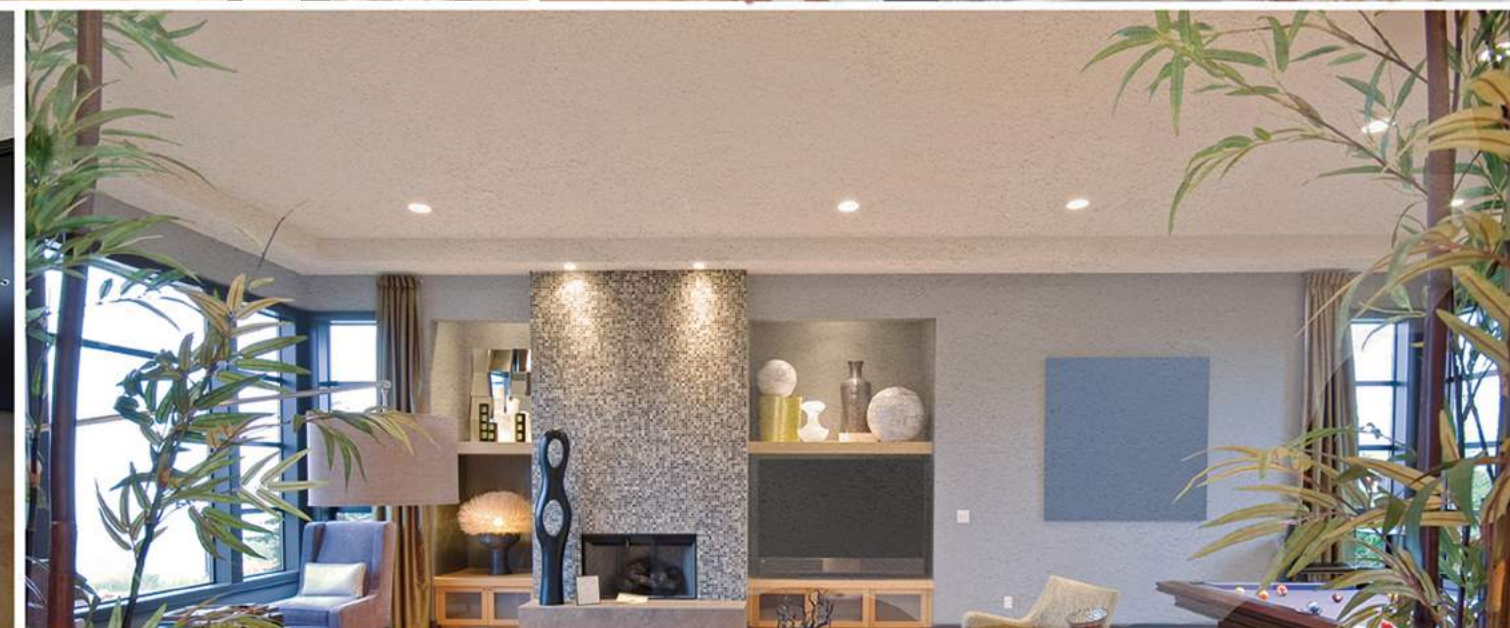
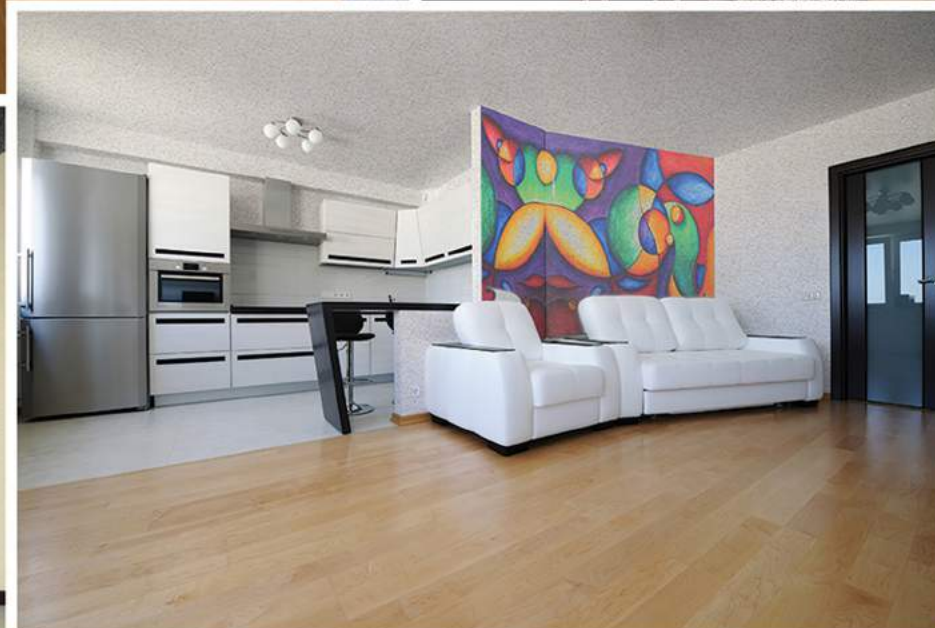
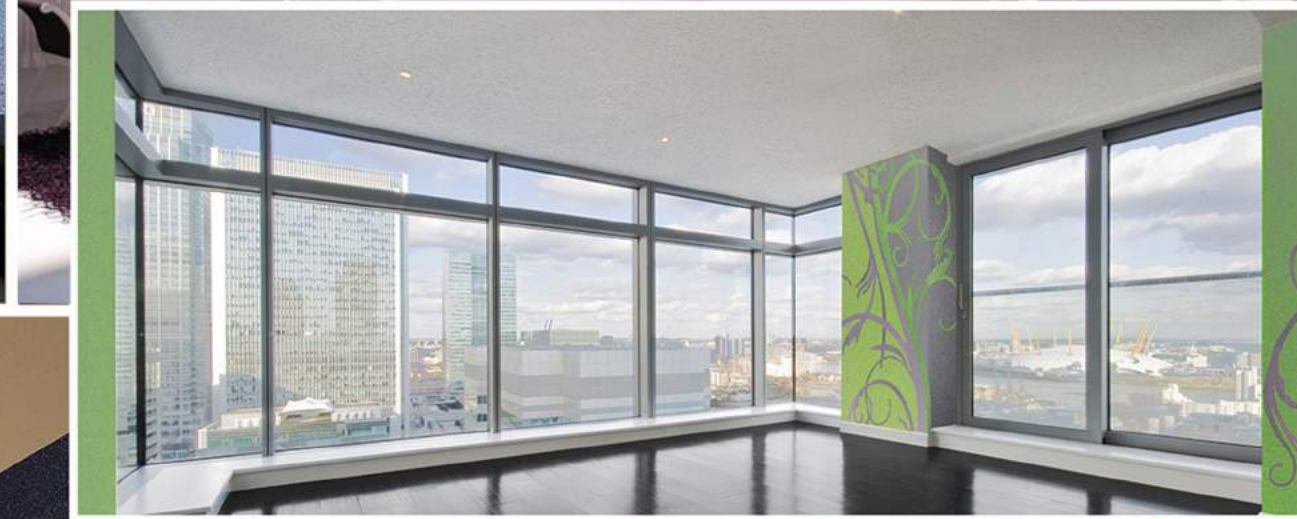
Belka drying time is 12 to 48 hours depending on ventilation, temperature and humidity.

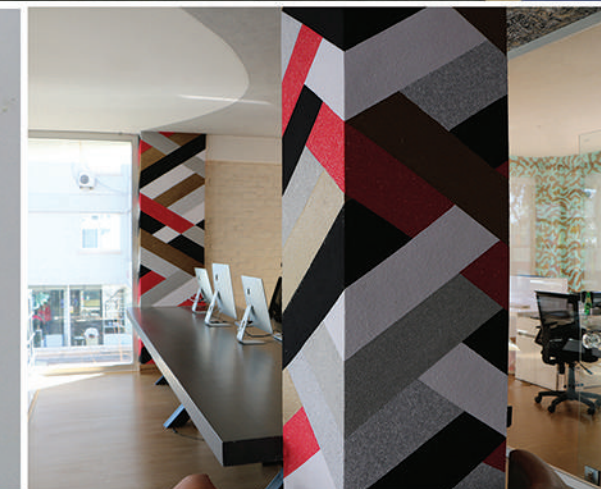
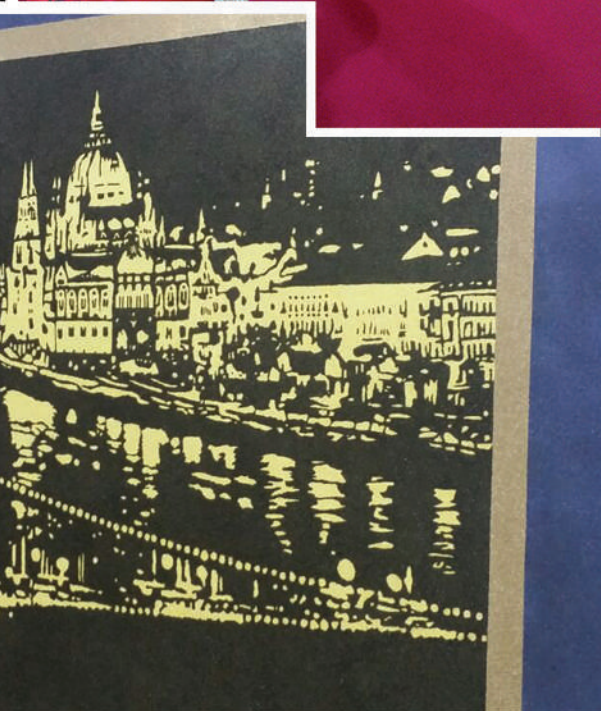
Belka is suitable for residential, commercial, educational, medical and recreational buildings.

Belka is justified solution which acts as a thermal insulator and avoids energy loss, helps containing the inner temperature and as results saves costs as much as possible.

Belka does not reflect light enhancing the harmony of a room, and creating a calming décor.

Belka is natural, odorless and VOC free; Belka is environmentally friendly and made from natural fibres, mineral flakes and natural adhesives.







Technical Specifications

PACKAGING	Packaged in 10 kilogram plastic bags
DENSITY	66kg per cubic meter
SURFACE COVERAGE	1 kilogram = 3 meters coverage
THICKNESS OF COVERING	0.5mm to 2mm per square meter
DRYING TIME	12 to 48 hours (depending on ventilation, temperature & humidity)
SHRINKAGE	% 0 on testing
ELASTICITY	3-4.5mm per square meter
ANTI STATIC PROPERTIES	Dust absorption/attraction reduced up to 99%
APPLICATION	One coat with a trowel
COMPOSITION	Cotton, mineral flakes, natural adhesive

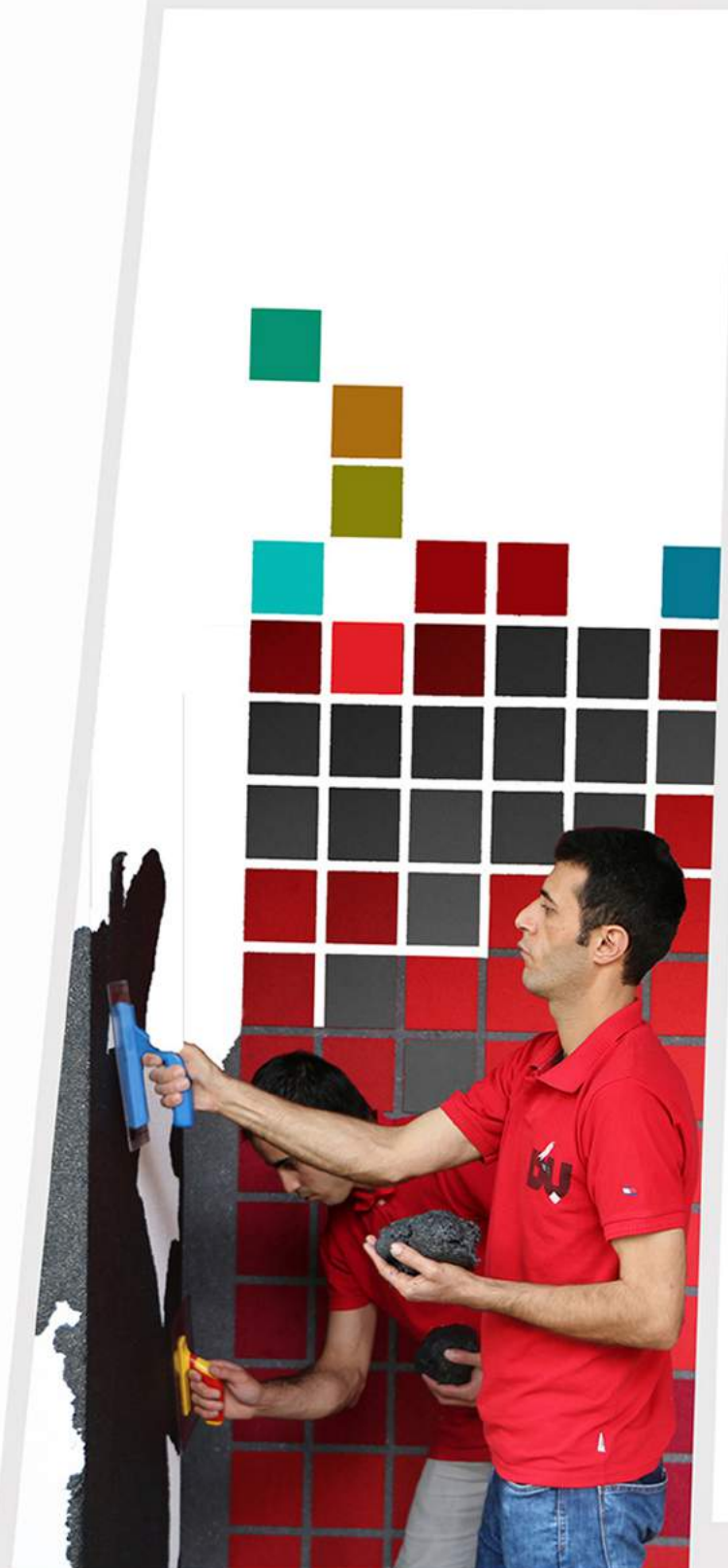


Belka can be applied on any surface

Belka can be readily applied to any surface including plaster, cement, wood, metal, glass and all painted surfaces (acrylic, water or oil based).
Belka has been specially designed to deliver stunning professional durable finishes no matter what the surface.



Plaster	
Painted Surfaces	
Decorative painter Surfaces	
Cement	
Brick	
Tiles	
Wood	
Glass	
Metal	
Gas beton	



Installation

Easy and Fast

1- Take as much of the Belka product as you need and put it in a container big enough to mix the product in.

2- Add about 3 liters of water for each kilogram of Belka product.

3- Mix the product and water together for 20 minutes until you get a consistency like dough.

4- Leave the mixture to set for 30 minutes before using.

5- After 30 minutes mix the set product again.

6- Apply the mixed product to the wall surface using a trowel.

Depending on the ventilation, temperature and humidity of the place, Belka will be completely dry in 12 to 48 hours.

Colour Chart – Catalouge B Series



Belka is available in over 60 colours in smooth, textured and decorative finishes. Colours and finishes can be custom made to suit your existing décor or interior design concept.

Belka is available in over 60 colours in smooth, textured and decorative finishes. Colors and finishes can be custom made to suit your existing décor or interior design concept.



“Chemtech”

Product Technical Specifications from Australia

“AWTA Textile Testing”

“Fire Test / Fail to Ignite”
in building material category from Australia

“KCL and KFL”

Health Certificate for building materials from South Korea

Australia **Best New Product** Award Winner 2009



CHEMTECH TESTING SERVICES PTY LTD


1st Floor, 91 Moreland Street, Footscray, VIC 3011
P.O. Box 202, Yarraville VIC 3013
Phone: (03) 9687 7655 Fax: (03) 9687 7680

TEST REPORT FOR TECHNICAL SPECIFICATIONS

PRODUCT: Belka Interior Wall Coating Material **TEST NUMBER:** 8-655553-AN

PACKAGING	10 kilogram plastic bag
DENSITY	66kg per cubic meter
SURFACE COVERAGE	1 kilogram = 2/7 meters coverage
THICKNESS OF COVERING	0.5mm to 2mm per square meter
DRYING TIME	12 to 48 hours (depending on ventilation, temperature & humidity)
SHRINKAGE	0% on testing
ELASTICITY	3-4.5mm per square meter
INSULATION - THERMAL	Coefficient of thermal conductivity 0.062kcal/mhc
INSULATION - ACOUSTIC	An average 17 to 5000 Hz at 24 db
FIRE RESISTANCE	Inflammable – Heat release rate of less than 50W/m ²
ANTI STATIC PROPERTIES	Dust absorption/attraction reduced up to 99%
APPLICATION	One coat with a trowel
COMPOSITION	Natural Fibers, mineral flakes and natural adhesive


DR GRAEME BECK
TECHNICAL SERVICES MANAGER


RUDI SENDELBECK
DIRECTOR